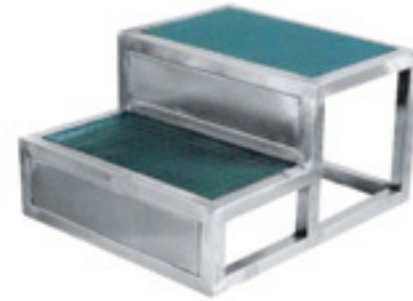

HX-101 不锈钢脚踏板凳
HX-101 Stainless steel foot stool

HX-102 住院病一览表 (60位)

 · 可选:
A 不锈钢 B 钢架 C 40位

HX-102 Inpatient list (60 bit)

OPTIONAL:
A Steel B Steel C 40 bit

HX-103 不锈钢双层脚凳
HX-103 Stainless steel footrest with double layer

HX-110 不锈钢药膏盅

 · 规格: (mm)
Ø 80, Ø 90, Ø 100, Ø 120

HX-110 Stainless steel cup cream

SPECIFICATIONS: (mm)
Ø 80, Ø 90, Ø 100, Ø 120

HX-111 不锈钢镊子筒 (倒锥型)

 · 规格: (mm)
大号 Ø80×198
中号 Ø64×158
小号 Ø45×113

HX-111 Stainless steel tweezers tube
(inverted cone)

SPECIFICATIONS: (mm)
Tuba Ø 80×198
Medium Ø 64×158
Trumpet Ø 45×113

HX-112 消毒瓶

 · 材质: A 塑料 B 不锈钢
· 规格: (mm) Ø 50×109 Ø 50×103
Ø 50×89 Ø 50×83
(盖子有缺口) (盖子有缺口)
Ø 50×59 Ø 50×53
(盖子无缺口) (盖子有缺口)

HX-112 Sterilized bottles

MATERIAL:
A stainless steel plastic system B Stainless
SPECIFICATIONS: (mm)
Ø 50×109 Ø 50×103
Ø 50×89 Ø 50×83
(With lid is chipped) (With lid is chipped)
Ø 50×59 Ø 50×53
(With lid unnotched) (With lid is chipped)

HX-104 不锈钢平板推车

 · 规格: (mm)
800×500×200+600

HX-104 Stainless steel ground trolley

SPECIFICATIONS: (mm)
800×500×200+600

HX-105 ABS病历夹
HX-105 ABS case history holder

HX-106 不锈钢病历夹
HX-106 Stainless steel case history holder

HX-113 不锈钢消毒盘 (带侧气孔)

 · 规格: (mm)
290×190×50 (11.5")
230×150×50 (9")
200×11×48 (8")
140×90×48 (6")

HX-113 Stainless steel sterilization tray
(side with hole)

SPECIFICATIONS: (mm)
290×190×50 (11.5")
230×150×50 (9")
200×11×48 (8")
140×90×48 (6")

HX-114 不锈钢消毒盘 (无孔)

 · 规格: (mm)
290×190×50 (11.5")
230×150×50 (9")
200×11×45 (8")
140×90×45 (6")

HX-114 Sterilized stainless steel
plate (no hole)

SPECIFICATIONS: (mm)
290×190×50 (11.5")
230×150×50 (9")
200×11×45 (8")
140×90×45 (6")

HX-115 不锈钢纱布罐

 · 规格: (mm)
Ø 160×154
Ø 140×130
Ø 120×120

HX-115 Stainless steel gauze jar

SPECIFICATIONS: (mm)
Ø 160×154
Ø 140×130
Ø 120×120

HX-107 不锈钢西式大便盆
HX-107 Western-style stool stainless steel basin

HX-108 不锈钢小便壶
HX-108 Stainless steel pot to urinate

HX-109 不锈钢贮槽 (拉伸型)

 · 规格: (mm)
Ø 170, Ø 200, Ø 230, Ø 260, Ø 300

HX-109 Stainless steel tank (tension type)

SPECIFICATIONS: (mm)
Ø 170, Ø 200, Ø 230, Ø 260, Ø 300

HX-116 不锈钢腰子盘

 · 规格: (mm)
浅型 深型
大号 204×130×25 243×125×50
中号 190×115×25 203×102×44
小号 175×104×25 165×80×38

HX-116 Stainless steel kidney-type plate

SPECIFICATIONS: (mm)
Shallow Deep
Tuba 204×130×25 243×125×50
Medium 190×115×25 203×102×44
Trumpet 175×104×25 165×80×38

HX-117 不锈钢治疗盘

 · 规格: (mm)
I型290×190×50
II型400×300×28
III型310×240×31

HX-117 Stainless steel plate treatment

SPECIFICATIONS: (mm)
I 290×190×50
II 400×300×28
III 310×240×31

HX-118 不锈钢方盘 (薄型卷边)

 · 规格: (mm)
450×330×33
400×300×33
310×240×31
260×200×31
230×170×31

HX-118 Stainless steel square plate (thin curling)

SPECIFICATIONS: (mm)
450×330×33
400×300×33
310×240×31
260×200×31
230×170×31


HX-119 不锈钢牙科手术盘

 · 规格: (mm)
215×105×20

HX-119 Stainless steel plate dental surgery
SPECIFICATIONS: (mm)
215×105×20

HX-120 不锈钢换药碗

 · 规格: (mm)
Ø160×52 Ø140×50 Ø120×47

HX-120 Stainless steel dressing bowl
SPECIFICATIONS: (mm)
Ø160×52 Ø140×50 Ø120×47

HX-121 不锈钢洗涤盆

 · 规格: (mm)
Ø400×160 Ø360×140 Ø32×130
Ø26×120 Ø24×110 Ø22×100

HX-121 Stainless steel wash basin
SPECIFICATIONS: (mm)
Ø400×160 Ø360×140 Ø32×130
Ø26×120 Ø24×110 Ø22×100

HX-128 不锈钢试管架 (卷边)

 · 规格: (mm)
(华氏) (康氏)
孔径 Ø18 孔径 Ø14
232×78×83 (30孔) 192×66×70 (30孔)
232×100×83 (40孔) 192×84×70 (40孔)
232×140×83 (60孔) 192×120×70 (60孔)
232×210×83 (90孔) 266×70×90 (20孔) Ø20
286×70×90 (20孔) Ø20
220×78×83 (30孔) Ø16

HX-128 Disinfection of stainless steel bottle rack
SPECIFICATIONS: (mm)
(F) (Kahn)
Aperture Ø18 Aperture Ø14
232×78×83 (30holes) 192×66×70 (30holes)
232×100×83 (40holes) 192×84×70 (40holes)
232×140×83 (60holes) 192×120×70 (60holes)
232×210×83 (90holes) 266×70×90 (20holes) Ø20
286×70×90 (20holes) Ø20
220×78×83 (30holes) Ø16

HX-129 铝质针管盒

 · 规格: (mm)
5ml, 10ml, 20ml, 50ml

HX-129 Aluminum needle box
SPECIFICATIONS: (mm)
5ml, 10ml, 20ml, 50ml

HX-130 不锈钢洗片架

 · 规格: (mm)
80" × 10", 10" × 12", 11" × 14",
12" × 15", 14" × 14", 14" × 17"

HX-130 Stainless steel wash rack photos
SPECIFICATIONS: (mm)
80" × 10", 10" × 12", 11" × 14",
12" × 15", 14" × 14", 14" × 17"

HX-122 不锈钢灌物桶

 · 规格: (mm)
Ø100×165 (1000ml)
Ø123×195 (2000ml)

HX-122 Stainless steel barrel filling material
SPECIFICATIONS: (mm)
Ø100×165 (1000ml)
Ø123×195 (2000ml)

HX-123 不锈钢量杯

 · 规格: (mm)
Ø85×110 (500ml)
Ø100×150 (500ml)
Ø123×190 (500ml)

HX-123 Stainless steel measuring cup
SPECIFICATIONS: (mm)
Ø85×110 (500ml)
Ø100×150 (500ml)
Ø123×190 (500ml)

HX-124 不锈钢泡手桶

 · 规格: (mm)
Ø230×370 氩弧焊接成型

HX-124 Stainless steel buckets in hand immersion
SPECIFICATIONS: (mm)
Ø230×370 TIG welding molding

HX-131 不锈钢脑打锤
HX-131 Stainless steel head hammer

HX-132 塑柄不锈钢开瓶器
HX-132 Plastic handle stainless steel bottle opener

HX-125 不锈钢污物桶

 · 规格: (mm)
8L (Ø205×280) 10L 12L 20L 25L

HX-125 Steel dirt bucket
SPECIFICATIONS: (mm)
8L (Ø205×280) 10L 12L 20L 25L

HX-126 不锈钢X光片定显影桶 (洗片桶)

 · 规格: (mm)
430×100×530 (5加仑)
430×200×530 (10加仑)

HX-126 Stainless steel X-ray imaging drum set (a film barrels)
SPECIFICATIONS: (mm)
430×100×530 (5 gallons)
430×200×530 (10gallons)

HX-127 不锈钢消毒瓶架

 · 规格: (mm) 二孔、三孔、四孔、
不锈钢染色体架
· 规格: (mm) 75×65×110

HX-127 Disinfection of stainless steel bottle rack
SPECIFICATIONS: (mm)
Two holes, three-hole, four-hole, stainless
steel frame chromosome
SPECIFICATIONS: (mm) 75×65×110

HX-133 不锈钢鼻镜

 · 型号:
小儿用; 成人用

HX-133 Stainless steel nose mirror
Model: Children type; Adults type

HX-134 不锈钢手术窥阴器

 · 型号:
中号手术用85×100mm 中号检查用

HX-134 Stainless steel surgical instruments Vaginal Speculum
Model: Medium surgical 85 x 100mm
Medium Check

HX-135 不锈钢肛门镜

钳式肛门镜; 筒式肛门镜; 喇叭式肛门镜

HX-135 Stainless steel anal mirror
**Clamp anus mirror; cylindrical anus mirror;
horn-style anal mirror**