



HX-H01 不锈钢地柜

HX-H01 Stainless steel floor cabinet

· 规格: (mm)
A: 1500×500×900 (三门三抽)
B: 1900×500×900 (四门四抽)

SPECIFICATIONS: (mm)
A: 1500×500×900 (3 door 3 drawer)
B: 1900×500×900 (4 door 4 drawer)



HX-H02 不锈钢水剂调配柜

HX-H02 Stainless steel cupboard agent deployment

· 规格: (mm)
A: 900×300/600×1980
B: 1200×300/600×1980
C: 1500×300/600×1980

SPECIFICATIONS: (mm)
A: 900×300/600×1980
B: 1200×300/600×1980
C: 1500×300/600×1980



HX-H05 不锈钢器械柜

HX-H05 Stainless steel instrument cabinet

· 规格: (mm)
950×400×1800

SPECIFICATIONS: (mm)
950×400×1800



HX-H06 不锈钢治疗柜

HX-H06 Treatment of stainless steel cabinets

· 规格: (mm)
A: 900×275/500×1980 (二门二抽)
B: 1200×275/500×1980 (三门三抽)
C: 1500×275/500×1980 (三门三抽)
D: 1900×275/500×1980 (四门四抽)

SPECIFICATIONS: (mm)
A: 900×275/500×1980 (2 door 2 drawer)
B: 1200×275/500×1980 (3 door 3 drawer)
C: 1500×275/500×1980 (3 door 3 drawer)
D: 1900×275/500×1980 (4 door 4 drawer)



HX-H03 不锈钢水剂调配柜

HX-H03 Stainless steel cupboard agent deployment

· 规格: (mm)
A: 900×300/600×1980
B: 1200×300/600×1980
C: 1500×300/600×1980

SPECIFICATIONS: (mm)
A: 900×300/600×1980
B: 1200×300/600×1980
C: 1500×300/600×1980



HX-H04 不锈钢器械柜

HX-H04 Stainless steel instrument cabinet

· 规格: (mm)
950×400×1800

SPECIFICATIONS: (mm)
950×400×1800



HX-H07 不锈钢治疗柜

HX-H07 Treatment of stainless steel cabinets

· 规格: (mm)
1800×350/750×1600

SPECIFICATIONS: (mm)
1800×350/750×1600

· 功能:
上部双玻璃推拉门, 中部三个抽屉, 下部为双不锈钢推拉门

FUNCTION:
The upper double-glass sliding doors. The middle three drawers. The lower pairs of stainless steel sliding doors



HX-H08 不锈钢清洗盆台柜

HX-H08 Stainless basin cabinet

· 规格: (mm)
1900×600×800+150

SPECIFICATIONS: (mm)
1900×600×800+150



HX-H09 不锈钢试验台

· 规格: (mm)
3000×250/1200×1980

HX-H09 Stainless steel test-bed

SPECIFICATIONS: (mm)
3000×250/1200×1980



HX-H10 不锈钢工作台(组合式)

· 规格: (mm)
3000×600×900

HX-H10 Stainless steel work table

SPECIFICATIONS: (mm)
3000×600×900



HX-H13 不锈钢药房成药架

· 规格: (mm)
A:1000×500×1980
B:1500×500×1980

· 可选:
钢架材料

HX-H13 Warehouse shelf stainless steel drugs

SPECIFICATIONS: (mm)
A:1000×500×1980
B:1500×500×1980

OPTIONAL:
steel material



HX-H14 不锈钢旋转成药架

· 规格: (mm)
∅800×1980

· 可选:
钢架材料

HX-H14 Stainless steel rotary rack drugs

SPECIFICATIONS: (mm)
∅800×1980

OPTIONAL:
steel material



HX-H11 不锈钢无菌器械柜

· 规格: (mm)
980×500×1980

· 功能:
上中下推拉门设计

HX-H11 Sterile stainless steel equipment cabinet

SPECIFICATIONS: (mm)
980×500×1980

FUNCTION:
push down on the sliding door design



HX-H12 不锈钢电脑发药台

· 规格: (mm)
A:1200×600×800
B:1400×600×800

HX-H12 Stainless Steel PC release behind the pharmacy counter

SPECIFICATIONS: (mm)
A:1200×600×800
B:1400×600×800

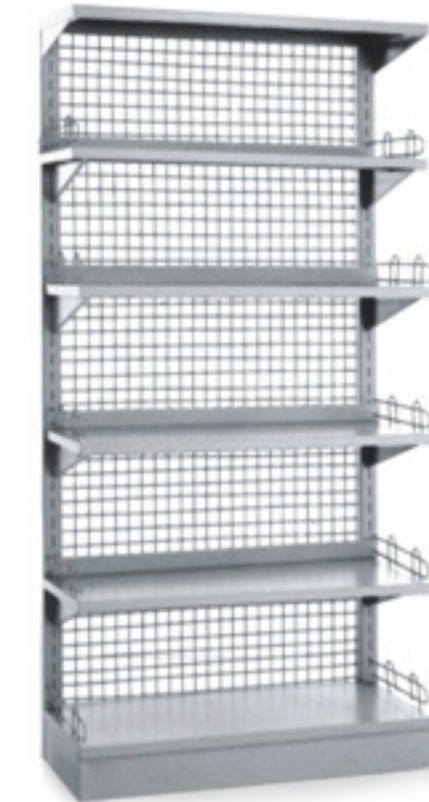


HX-H15 不锈钢可调双斗成药架

· 规格: (mm)
980×500×1980

HX-H15 Stainless steel adjustable double-doo drug shelves

SPECIFICATIONS: (mm)
980×500×1980



HX-H16 成药架

· 规格: (mm)
980×400×1980

HX-H16 Drug shelf

SPECIFICATIONS: (mm)
980×400×1980



HX-H17 无门药柜

· 规格: (mm)
980×400×1980

HX-H17 No one to turn medicine cabinet

SPECIFICATIONS: (mm)
980×400×1980

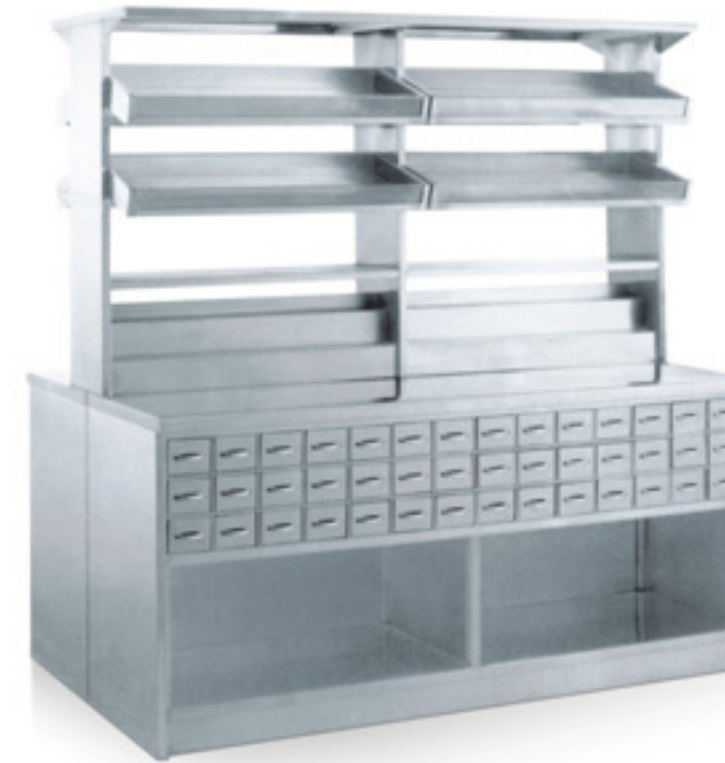


HX-H18 不锈钢器械柜

· 规格: (mm)
950×400×1980

HX-H18 Stainless steel instrument cabinet

SPECIFICATIONS: (mm)
950×400×1980



HX-H21 不锈钢双面西药调剂柜

· 规格: (mm)
1980×700/1100×1980

HX-H21 Stainless steel double-sided cabinet western transfers

SPECIFICATIONS: (mm)
1980×700/1100×1980



HX-H22 不锈钢双面中药调剂柜

· 规格: (mm)
1980×500/1200×1980

HX-H22 Stainless steel double-sided regulate traditional chinese medicine cabinet

SPECIFICATIONS: (mm)
1980×500/1200×1980



HX-H19 不锈钢器械柜

· 规格: (mm)
1200×400×1800

HX-H19 Stainless steel instrument cabinet

SPECIFICATIONS: (mm)
1200×400×1800



HX-H20 不锈钢双面西药调剂柜

· 规格: (mm)
1980×300/1000×1980

HX-H20 Stainless steel double-sided cabinet western transfers

SPECIFICATIONS: (mm)
1980×300/1000×1980



HX-H23 不锈钢立式中药柜 (40抽)

· 规格: (mm)
980×400×1980

HX-H23 Vertical stainless steel medicine cabinet (40 drawer)

SPECIFICATIONS: (mm)
980×400×1980



HX-H24 不锈钢双门四抽更衣柜

· 规格: (mm)
950×400×1800

HX-H24 Stainless steel two-door four-drawer chest in civilian clothes

SPECIFICATIONS: (mm)
950×400×1800