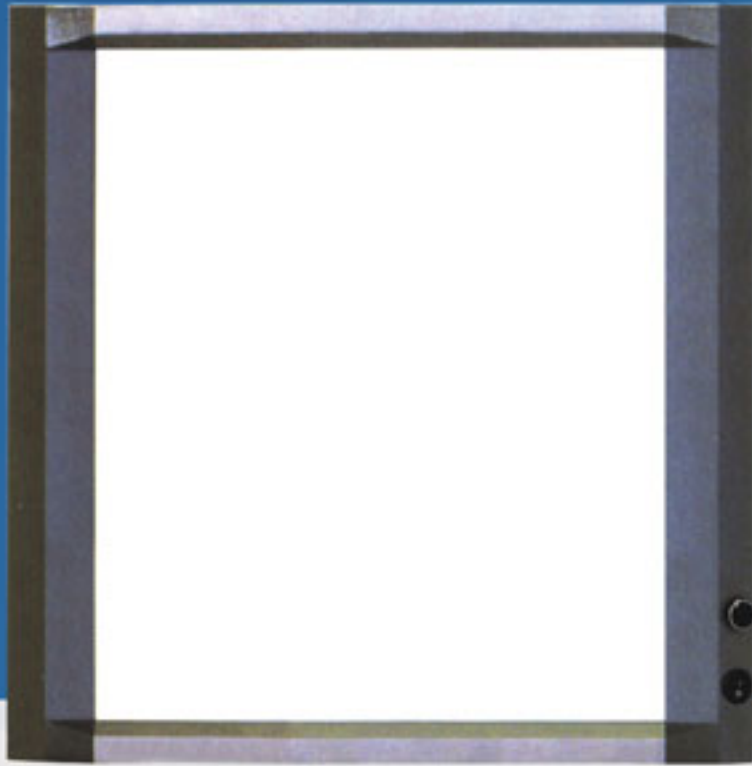




X-ray Instruments and Accessories



Super-thin LCD X-ray film illuminator



The thinnest illuminator

Advanced TFT-LCD Back light technology distribute the screen luminance averagely, and help the reading be more accurate.

Latest CCFL cold cathode fluorescent lamp is long using life, and the lightness is stable, no flickering.

High Illumination intensity and color temperature ($\geq 9800K$) are more suitable for reading the medical films.

Advanced clamp device assure the films are inserted and taken off easily, and clamped tightly.

2.5cm thickness is super-thin all over the world.



Ordinary type



Step adjusting type

Super-thin X-ray film illuminator

The brightness is the highest in China.

8cm of thickness is the thinnest in the ordinary illuminators.

Frame is made of electrophoresis aluminum alloy material which is more durable and nicer.

The screen is made of imported white polymethylmethacrylate plate, which is bright, clean and no color fading.

The lamp is easy to change by adopting the general standard fluorescent lamp tube. It will never fade in color as anti-ultraviolet ray.

Advanced clamp device assure the films are inserted and taken off easily, and clamped tightly.

Hanging on the wall or putting on the desk are available.

The highest brightness



XD-PB
Ordinary type



XD-PTB
Step adjusting type



XD-TGB
Digital button-press
adjusting type



Luxury II X-ray film illuminator

The first aluminum alloy illuminator



It is the first one to make the viewer body with aluminum-alloy to shape wholly in domestic.

Frame is made of electrophoresis aluminum alloy material which is more durable and nicer.

The screen is made of imported white polymethylmethacrylate plate, which is bright, clean and no color fading.

The lamp is easy to change by adopting the general standard fluorescent lamp tube.

It will never fade in color as anti-ultraviolet ray.

Advanced clamp device assure the films are inserted and taken off easily, and clamped tightly.

Hanging on the wall or putting on the desk are available.



XD-PL
Ordinary type



XD-PTL
Step adjusting type



XD-TGL
Digital button-press
adjusting type

Luxury | X-ray film illuminator

Double-sided illuminator

Single-sided and double-sided illuminators are available.

Double-sided illuminator is placed in the middle of desk for doctors at both ends of desk to use.

The screen is made of imported white polymethylmethacrylate plate, which is bright, clean and no color fading.

The lamp is easy to change by adopting the general standard fluorescent lamp tube.

It will never fade in color as anti-ultraviolet ray.

Advanced clamp device assure the films are inserted and taken off easily, and clamped tightly.

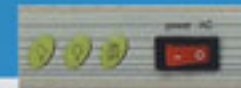
Hanging on the wall or putting on the desk are available.



XD-P
Ordinary type



XD-PT
Step adjusting type



XD-TG
Digital button-press
adjusting type

X-ray film illuminator for mammography

the original manufacturer and exporter



It was at first in producing and exporting by us.

Frame is made of electrophoresis aluminum alloy material which is more durable and nicer.

The screen is made of imported white polymethylmethacrylate plate, which is bright, clean and no color fading.

The lamp is easy to change by adopting the general standard fluorescent lamp tube.

It will never fade in color as anti-ultraviolet ray.

Advanced clamp device assure the films are inserted and taken off easily, and clamped tightly.



XD-PR
Ordinary type



XD-PTR
Step adjusting type



XD-TGR
Digital button-press
adjusting type

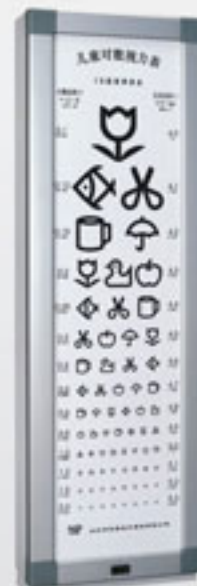
Standard Visual Chart Light Box

The first aluminum alloy illuminator

The frame is made of high-strength aluminum alloy, matched with highly-clear board of the visual signs. The whole body of box is made of high-quality steel plate and coated by electric-static spraying powder. It is superb in design and durable to use. The visual signs are in great contrast and highly clear, ensuring and exact checking result.

Four corners of box are connected with good quality brass plate, and the surface is decorated with ABS plastic plate.

The light box has two specifications of testing distances: 2.5m and 5.0m



X-ray radiographic cassette



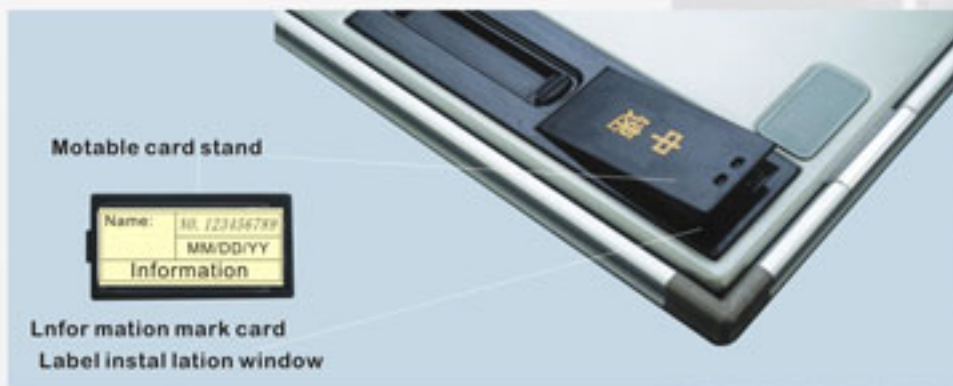
The XH series of x-ray radiographic cassette include three types; XH-P is the standard type; XH-PW has ID window; and XH-PM is a patent product with label installation, the three all have different specification in either metric or imperial system.

The series are made of specified aluminium alloy frame, specified engineering plastics and high-stamina aluminium plate, they look good in shape and are convenient and durable in use. You wouldn't worry about damage even in case it falls down from one meter high.

With a inner layer made out of high-stretch material, the X-ray film stick to the screen tightly and equally, the photograph is clear and rich in levels. The inner layer is covered by cloth, so it is very convenient to change the screen is and without damage to the inner layer.



XH-PW type with ID window, no need of sticking any lead letter on the cassette, you can get the patient's information record from the film only by applying a regular ID film mark equipment.



Using the patent product XH-PM with label installation, there is no need of sticking any lead letter either applying and ID films mark equipment, you just need to write down the patient's information (name, sex, age, date, No., etc.) on paper card (namely common white paper or xerox paper) with common black writing pen, put it on the movable card stand and fix the stand in the label installation window, then you can record the information on X-ray film while taking pictures. The operation of the product can be completed in register's office or light room, it is very convenient and reliable. You can also have the card printed in advance, and just need to fill in some simple and changeable information (such as names and so on) when use, so it can promote the process of regular

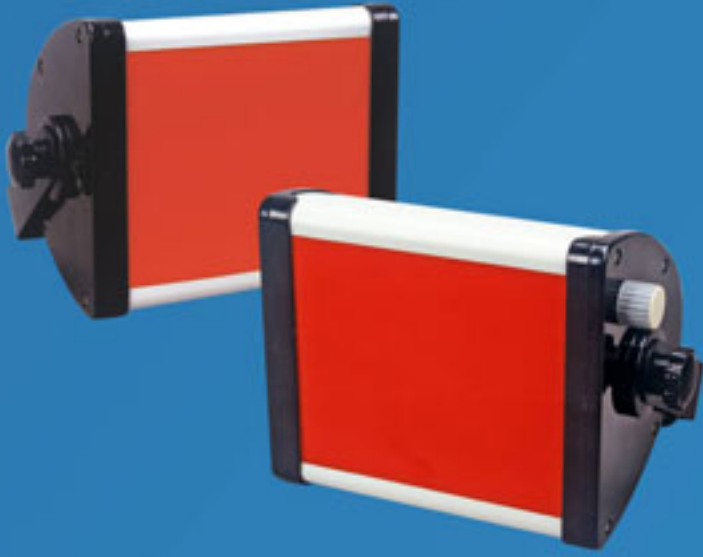


X-ray Intensifying Screen (400,Blue) Rare Earth



X-ray Intensifying Screen (500,Green) Rare Earth

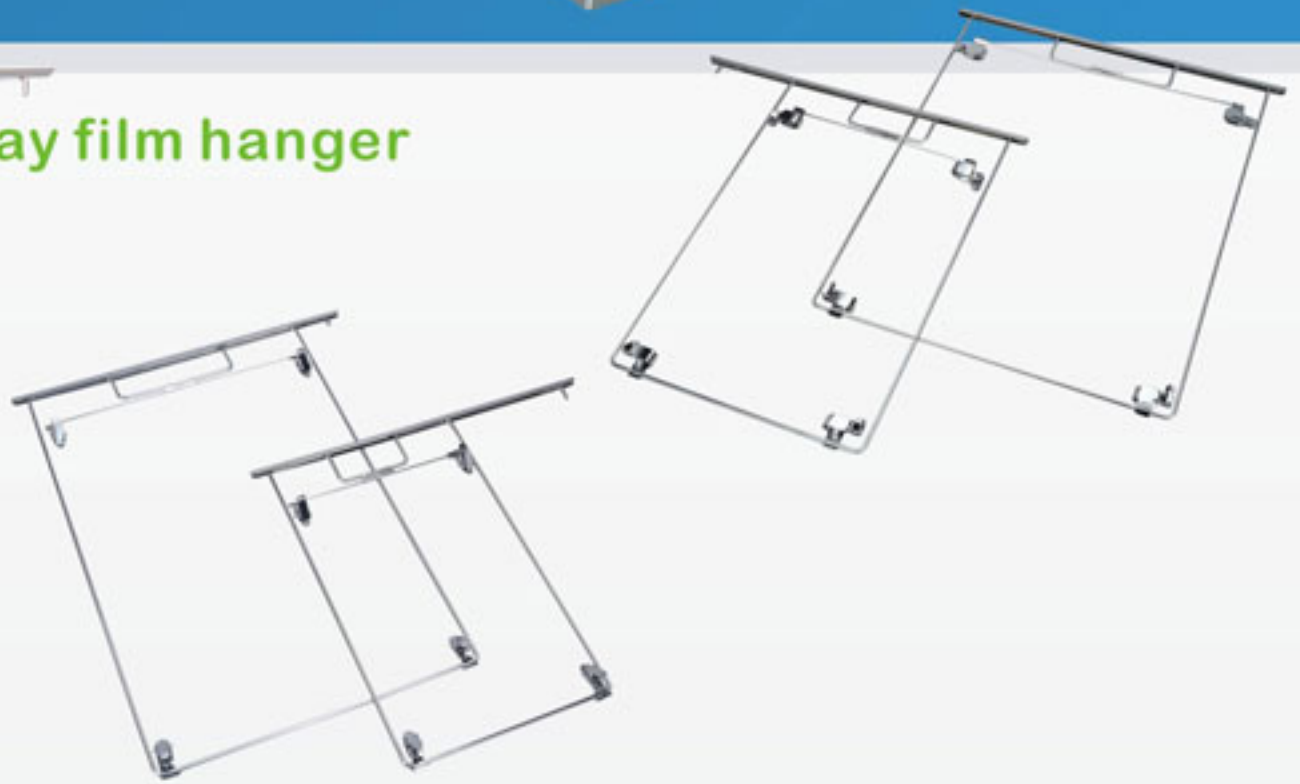
X-ray film safety light



Container for film development



X-ray film hanger



Standing photographing shelf



The standing photographing shelf is suitable for x-ray photographing of abdomen and above. It is made up of high quality rolled steel and the exterior surface is decorated with static spray plastic, which is elegant and durable. The photographing shelf is supported by a slanted-pole, which can ensure there is no shake while taking photograph and therefore make the film more clear.

Ceiling transfusion support



Stand transfusion support

Nurse Call System



YC-A Single-way nurse call system



YC-B Digital indication single-way nurse call system

Calling made convenient

Now Patients Comfort.....Just A Call Away.....

Nurse Call System enables nurse to provide prompt & effective responses to patients calls at all times.

Nurse call system has adopted the most advanced microcomputer special chip, the communication is exact, prompt, unintermittent calling. It is newly developed to meet the needs of hospitals, which is one of the most advanced Nurse Call Systems in China, has the features of easy installment and operation, various and stable functions.

The Nurse call system is composed of master unit (desk top or wall on), hand set, bed unit, emergency unit, corridor display screen, door lamp.

Thanks to unique advanced microprocessor based technology because of which is designed to work for 24hrs, 365days so that you can ensure unconditional support & comfort to your patient.

Whenever patient seek nurse assistance he presses the call button provided on the handset. Particular room no. is display at the nurse counter. The indication voice sounds simultaneously. The call can also be acknowledged in the corridor display screen. This will draw the attention of nurse very soon.

YC-A Single-way nurse call system : unintermittent calling, calling storage, the indication light on the master unit will indicate the bed number with sound alarm, corridor display screen is optional.

YC-B Digital indication single-way nurse call system : on the based of YC-A, it add the digital indication function to indicate the multiple calling numbers and bed numbers, can display the time, calendar, function, self-exam, scan, door lamp etc. and also provide several indication music for your choice. Corridor display screen with clock is available.

YC-C Double-way nurse call system : On the based of YC-B, it add the functions of interphone, hands-free, audiomonitor, and can connect to the outer telephone.

YC-D Multi-function & double-way nurse call system: On the based of YC-C, it add the function of special nurse, memo, broadcast.



YC-C Double-way nurse call system



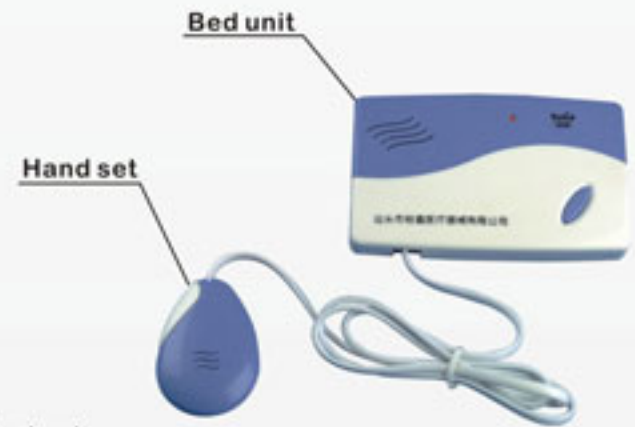
YC-D Multi-function & double-way nurse call system



I type corridor indication screen with clock

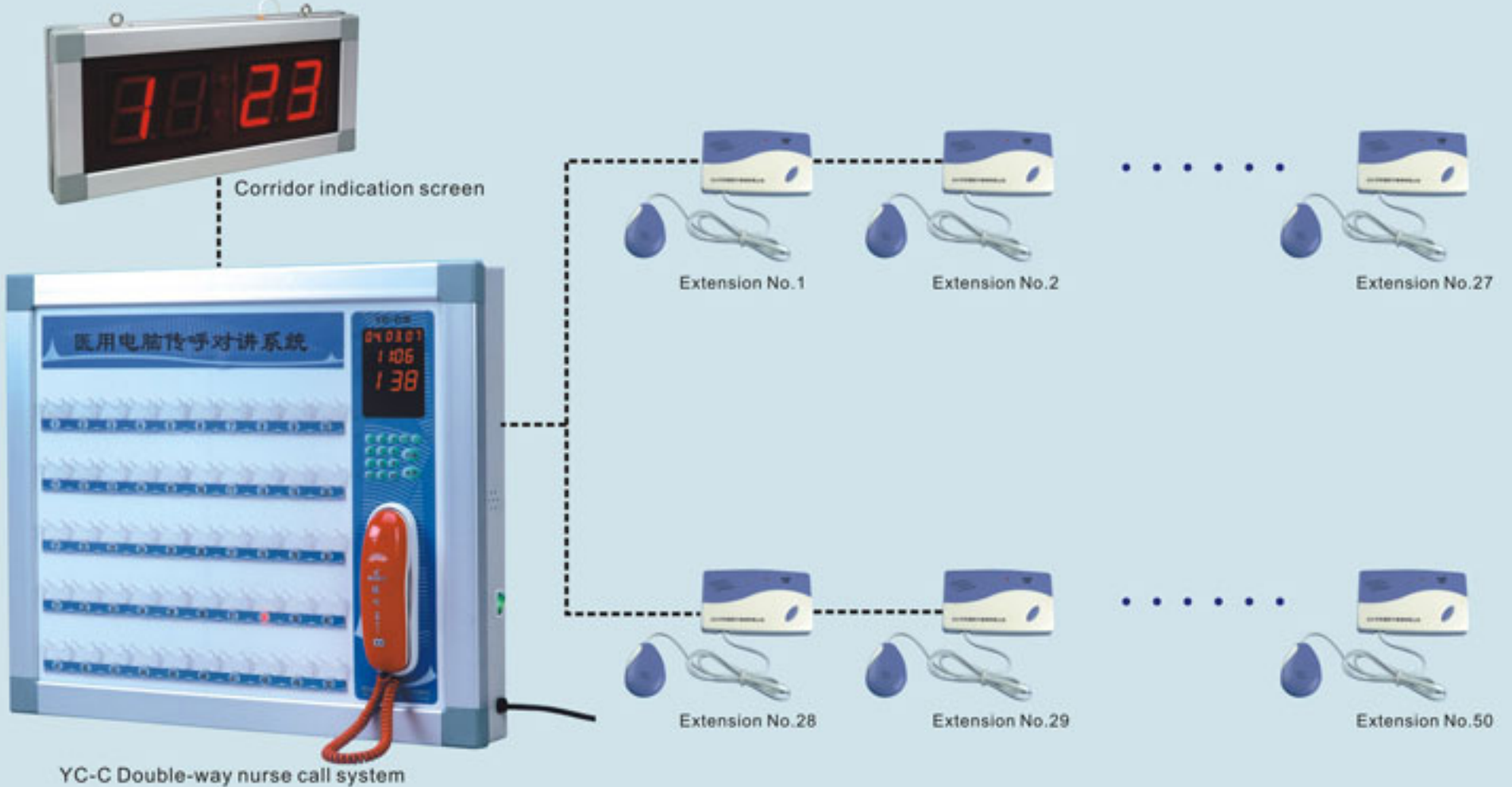


II type corridor indication screen with clock



Installed extension

Indication Picture



YC-C Double-way nurse call system



MINSTON

www.minston.com.cn



Shantou Minston Medical Instrument Co., Ltd.

E-mail: minstonexport@gmail.com
info_minston@yahoo.com

Tel: 86-754-88481863 Fax: 86-754-88481864

Add: 7/9F Fengfa garden east building west lift
Shantou, China

www.minston.com.cn